

RESOLUTION

COMMUNITY CHARACTER CORRIDOR (CCC) BUFFER TREATMENT GUIDELINES

AND MAP

WHEREAS, the Community Character Corridor (CCC) Buffer Treatment Guidelines and Map were created to establish three sets of landscape design guidelines for development along all CCC throughout the County; and

WHEREAS, the 2009 Comprehensive Plan identified the need to create and designate guidelines for CCC buffer landscape treatments; and

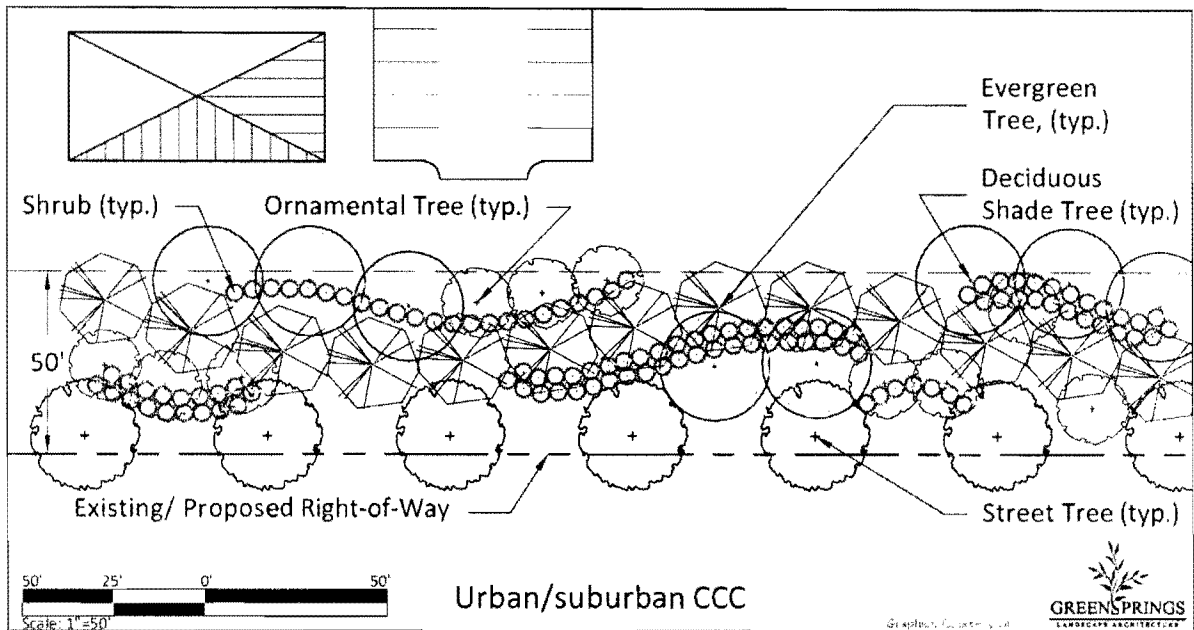
WHEREAS, the Policy Committee recommended endorsement of the CCC Buffer Treatment Guidelines and Map to the Planning Commission on February 3, 2011; and

WHEREAS, the James City County Planning Commission, after a public hearing, endorsed the revisions to the CCC Buffer Treatment Guidelines and Map on October 5, 2011, by a vote of 6-1.

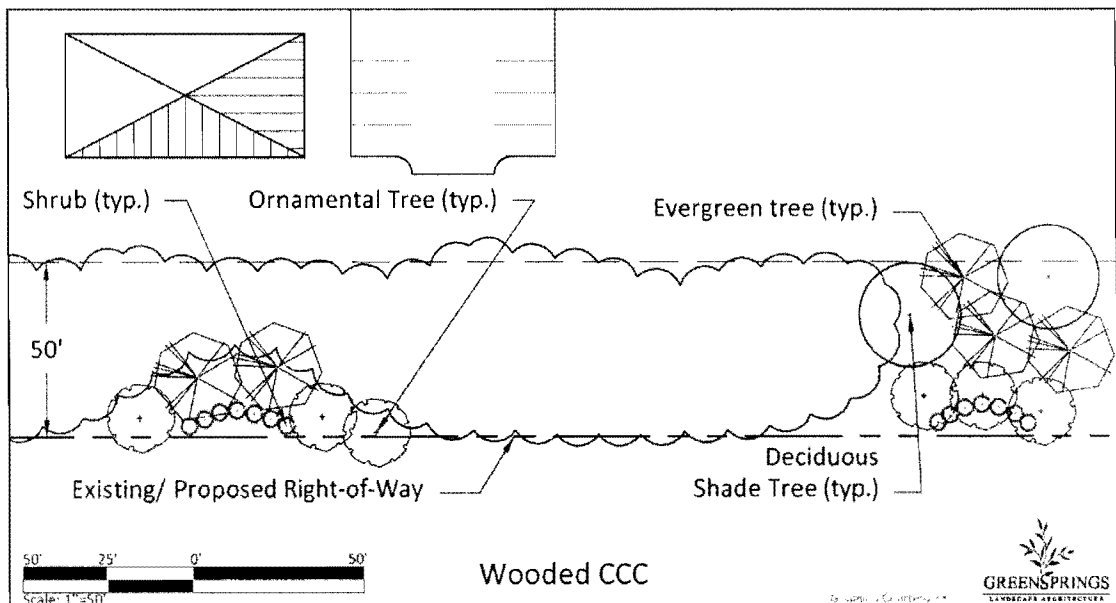
NOW, THEREFORE, BE IT RESOLVED that the Board of Supervisors of James City County, Virginia, does hereby endorse the following CCC Buffer Treatment Guidelines and the James City County CCC Type Designation and Buffer Treatment Map dated January 13, 2011:

Purpose: The Comprehensive Plan establishes a network of CCCs throughout the County, along which all commercial developments are required to provide a 50-foot average buffer and residential developments provide a 150-foot buffer. It is the purpose of these CCC Buffer Treatment Guidelines, in conjunction with the James City County CCC Type Designation and Buffer Treatment Map, to designate all corridors as a particular type (Urban/Suburban, Wooded, or Open/Agricultural) and to give guidance on the landscape treatment expected for each type. The descriptions and sample drawings below depict the landscaping style required for each corridor type to aid in creating appropriate landscape plans for developments along these corridors.

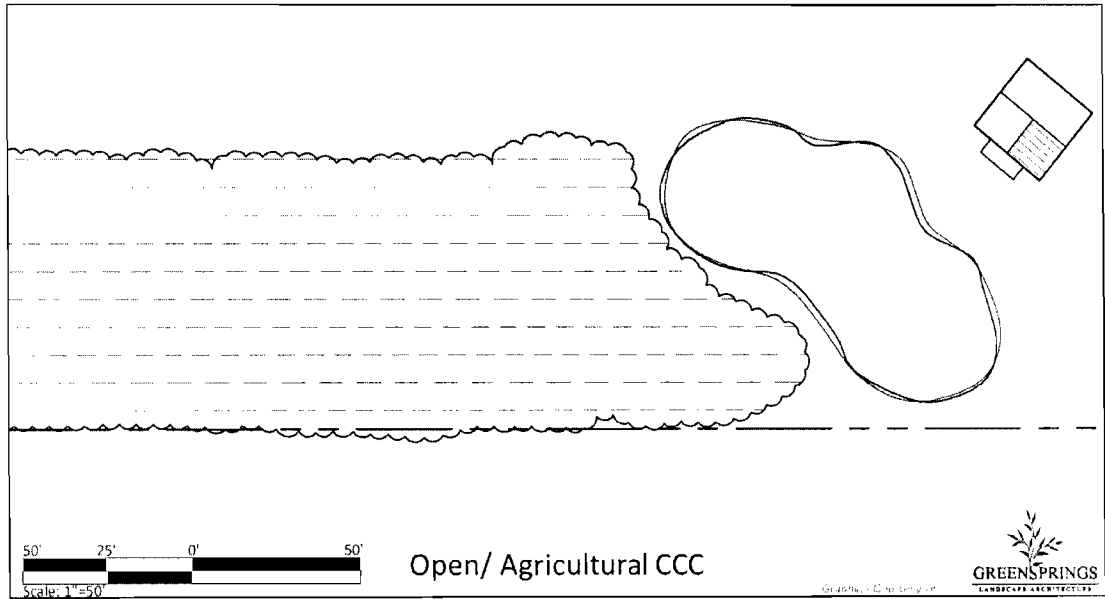
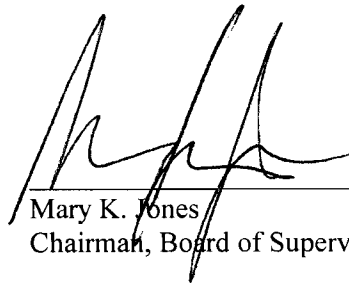
Urban/Suburban CCCs - *An Urban/Suburban CCC is characterized as having high to moderate traffic, commercial uses, and some residential uses. The predominant visual character of these corridors should be the built environment and the natural landscape, with parking and other auto-related areas as a secondary component. The buffer treatments should incorporate existing specimen and understory trees, required plantings, and any legislated enhancements such as over-sized landscape plants, the use of berms, and other desirable design features to complement and enhance the visual quality of the urban corridor. Auto-related activities such as parking lots and other outdoor operations should be screened with required evergreen plantings. In comparison to the Wooded and Open/Agricultural treatments, this treatment provides the applicant with the most visibility for the commercial use and the most flexibility in establishing a manicured and/ or formal look. The corridors designated with this type of treatment are in Community Character Areas and other urban areas of the County that have mainly commercial uses. Roads in New Town, Five Forks, Toano, Norge, and Richmond Road are examples of the Urban/Suburban type of treatment.*



Wooded CCCs - A wooded CCC is characterized as having natural wooded areas along the road, with light to moderate traffic, and minimal existing or planned commercial development. The objective of the buffer is to visually screen the development from the road. Ideally, existing vegetation should be preserved or supplemented to create a wooded buffer that preserves open space and wildlife habitat to maintain the natural character of the County. Corridors appropriate for this type of treatment include areas that have existing vegetation consisting of mature trees and shrubs and that are mostly developed with residential uses. Corridors along John Tyler Highway, Centerville Road, Longhill Road, Greensprings Road, and Route 199 are examples of the wooded landscape type treatment. This type of treatment offers the least amount of visibility to the development, and the intent is to preserve the natural beauty of the development site. The design should be informal and natural.

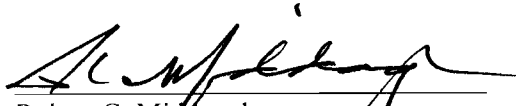


Open/Agricultural CCCs - An Open/Agricultural CCC is characterized as a corridor located primarily in rural lands where farming and forestry activities are predominant or sought to be preserved. The objective of the Open/Agricultural designation is to preserve the view and integrity of farm fields and natural open spaces so they remain the dominant visual features. This type of treatment is appropriate for the agricultural areas that exist in the County. The Anderson's Corner roads, Forge Road, and Old Stage Road are examples of the Open/Agricultural treatment type.

Mary K. Jones
Chairman, Board of Supervisors

ATTEST:



Robert C. Middaugh
Clerk to the Board

<u>SUPERVISOR</u>	<u>VOTE</u>
KENNEDY	AYE
GOODSON	AYE
MCGLENNON	AYE
ICENHOUR	AYE
JONES	AYE

Adopted by the Board of Supervisors of James City County, Virginia, this 22nd day of November, 2011.